

1125 YARD STREET | COLUMBUS, OHIO

Retail Leasing Opportunities

GRANDVIEW
YARD



±14,500 SF FIRST FLOOR RETAIL/RESTAURANT SPACE AVAILABLE

1125 YARD STREET BUILDING FEATURES

- Two-story, mixed-use medical office and retail building
- Complimentary surface-lot parking
- Multiple patios, including an 850 SF covered space on the south end cap
- Prominent store fronts with highly visible exterior signage
- +15 foot ceiling heights
- Second floor is fully leased to Columbus OBGYN and OhioHealth

DEVELOPMENT OVERVIEW

- 125-acre mixed-use development that blends suburban ease with urban walkability
- Adjacent to top-performing Giant Eagle Market District and more than 4,000 Nationwide Associates
- 1.2 million SF of commercial office and ±850 multi-family residences and for sale homes
- Panera Bread, Chick-fil-A, Jason's Deli, Hofbrauhaus, Eddie George's Grill, Brekkie Shack, Winans Chocolates + Coffees + Wine, LA Fitness, MY SALON SUITE and Club Pilates
- Courtyard by Marriott, Hyatt Place, and The Grand Event Center

TRADE AREA DEMOGRAPHICS

One Mile

- Population: 20,239

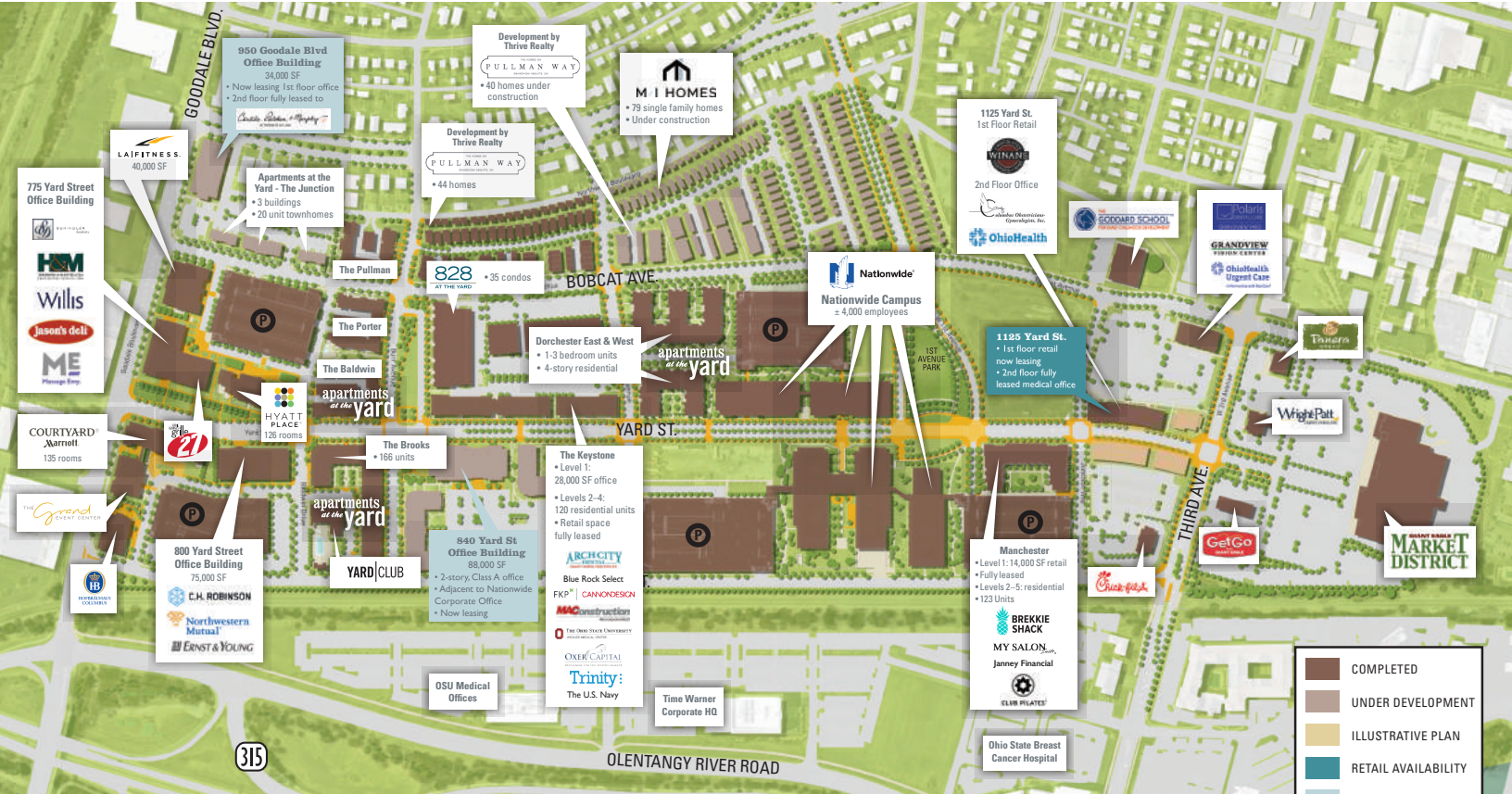
Three Miles

- Population: 162,383

Five Miles

- Population: 378,890





±14,500 SF* AVAILABLE + OUTDOOR PATIOS

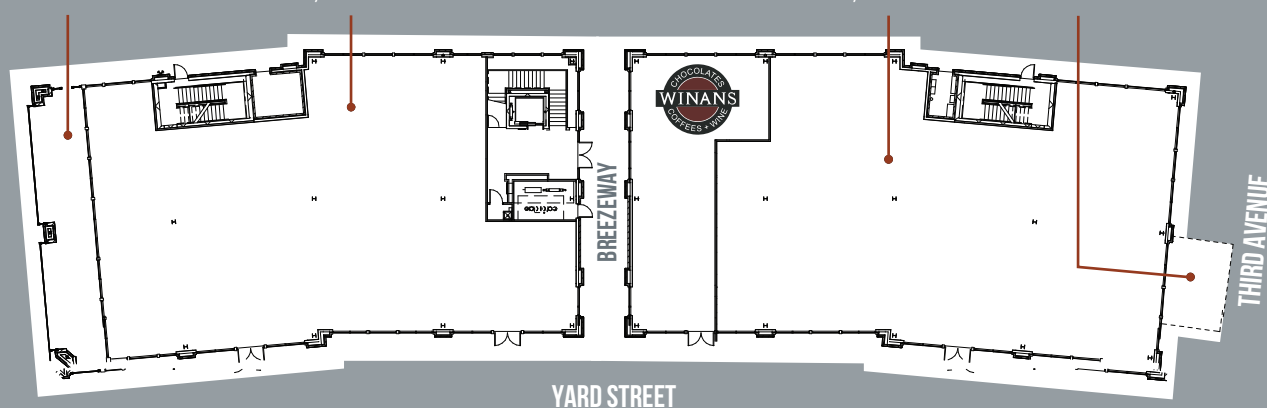
* FULLY DEMISABLE

COVERED PATIO
850 RSF

SUITE 150
6,731 RSF

SUITE 100
6,910 RSF

PATIO
332 RSF



GRANDVIEW YARD IS OWNED AND DEVELOPED
BY NATIONWIDE REALTY INVESTORS



Nationwide®

375 North Front Street, Suite 200 | Columbus, Ohio 43215
www.nationwiderealtyinvestors.com
Chris Thompson: thompscj@nationwide.com | (614) 857-2330

RETAIL LEASING



**Newmark
Knight Frank**

150 East Broad Street | Columbus, OH 43215
www.ngkf.com
Steve Siegel: steve.siegel@ngkf.com | (614) 883-1200

