

800 YARD STREET

Multi-Tenant Office Building

GRANDVIEW
YARD



* Rendering subject to change

The 800 Yard Street building offers
**UNIQUE MULTI-TENANT CLASS A OFFICE SPACE IN A
PRIME LOCATION NEAR HOTELS, A CONFERENCE CENTER,
AND RESTAURANTS, WITH EASY HIGHWAY ACCESS.**

The 800 Yard building is located at the corner of Yard Street and Baldwin Drive, the main thoroughfare in Grandview Yard. The 3-story building, anchored by Ernst & Young and Northwestern Mutual, boasts 75,000 square feet of office space with ample parking in an adjacent two-level parking deck with over 500 spaces.

- Located at the intersection of Yard Street and Baldwin Drive
- 3-story, 75,000 square foot building
- Convenient parking in adjacent two-level parking deck
- Anchored by Ernst & Young and Northwestern Mutual

Grandview Yard is a 125-acre mixed-use development featuring a strategic-planned mix of office, residential, retail, and restaurant uses. Located at the intersection of SR 315 and I-670 in beautiful Grandview Heights, Grandview Yard is just minutes from Downtown Columbus, the Arena District, and The Ohio State University Campus. Grandview Yard features appealing architecture, convenient parking, and ample green space. Grandview Yard is proud to be the first development in the Midwest to be certified as a LEED-ND community.



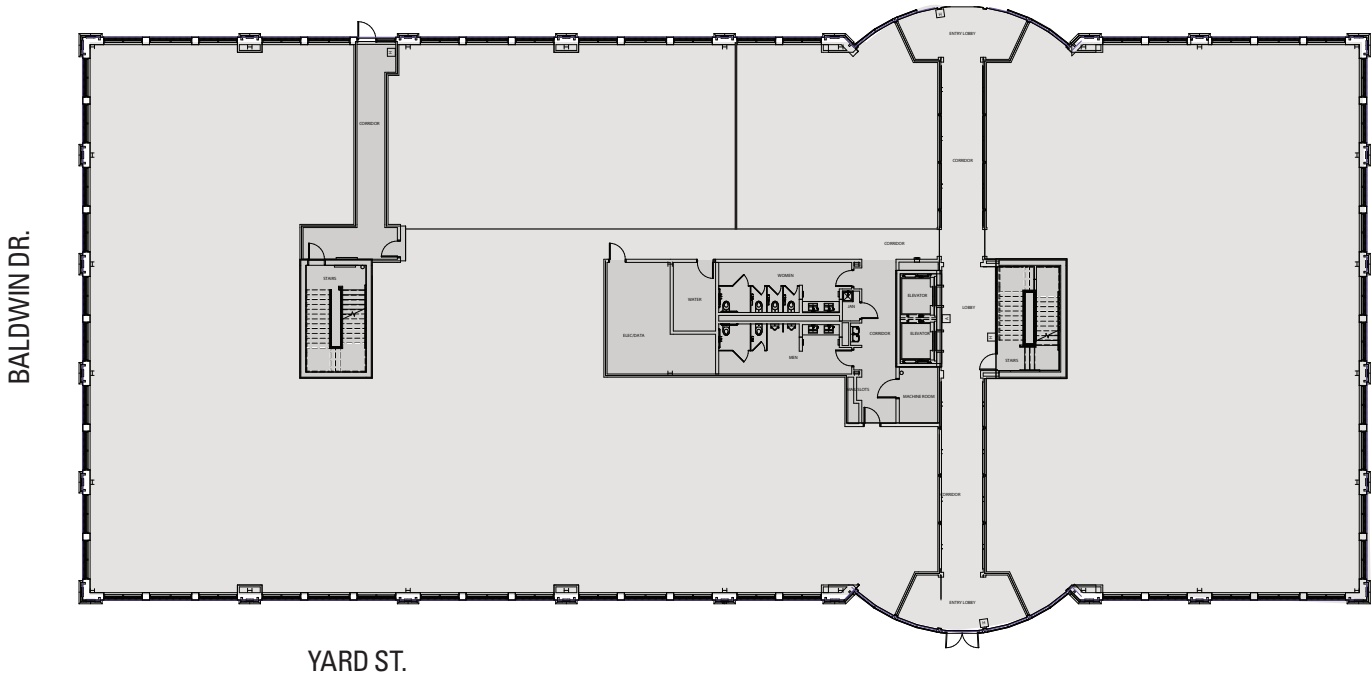
Nationwide®

Grandview Yard is owned and developed by Nationwide Realty Investors

GRANDVIEWYARD.COM

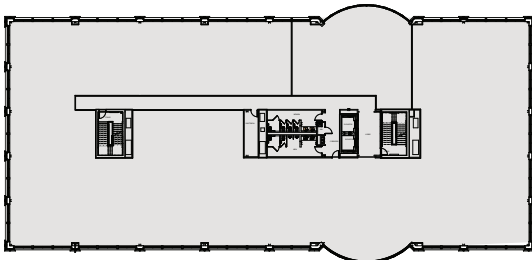
FIRST FLOOR PLAN

No Vacancy



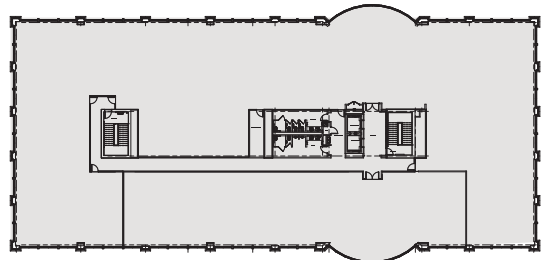
SECOND FLOOR PLAN

No Vacancy



THIRD FLOOR PLAN

No Vacancy



Nationwide®

Nationwide Realty Investors

375 North Front Street, Suite 200
Columbus, Ohio 43215
www.nationwiderealtyinvestors.com

Chris Thompson:
thompscj@nationwide.com | 614.857.2330



150 East Broad Street | Columbus, OH 43215
(614) 883-1200 | www.ngkf.com

Office Leasing

Wayne Harer: wayne.harer@ngkf.com
Ken Isenbarger: Kenneth.isenbarger@ngkf.com

Retail Leasing

Steve Siegel: Steve.Siegel@ngkf.com

