

950 GOODALE BLVD.

Multi-Tenant Office Building

GRANDVIEW
YARD



* Rendering subject to change

MULTI-TENANT CLASS A OFFICE

- 34,000 SF Class A, two-story office building
- Located at the intersection of Goodale Blvd and Northwest Blvd
- Immediate access to SR 315 and I-670 via Goodale Blvd
- Anchored by approximately 17,000 SF headquarter office of Carlile, Patchen & Murphy
- Walkable amenities include LA Fitness, Jason's Deli, Hofbrauhaus, The Grand Event Center and two hotels
- Ample adjacent parking

Grandview Yard is a 125-acre mixed-use development featuring a strategic-planned mix of office, residential, retail, and restaurant uses. Located at the intersection of SR 315 and I-670 in beautiful Grandview Heights, Grandview Yard is just minutes from Downtown Columbus, the Arena District, and The Ohio State University Campus. Grandview Yard features appealing architecture, convenient parking, and ample green space. Grandview Yard is proud to be the first development in the Midwest to be certified as a LEED-ND community.



Nationwide®

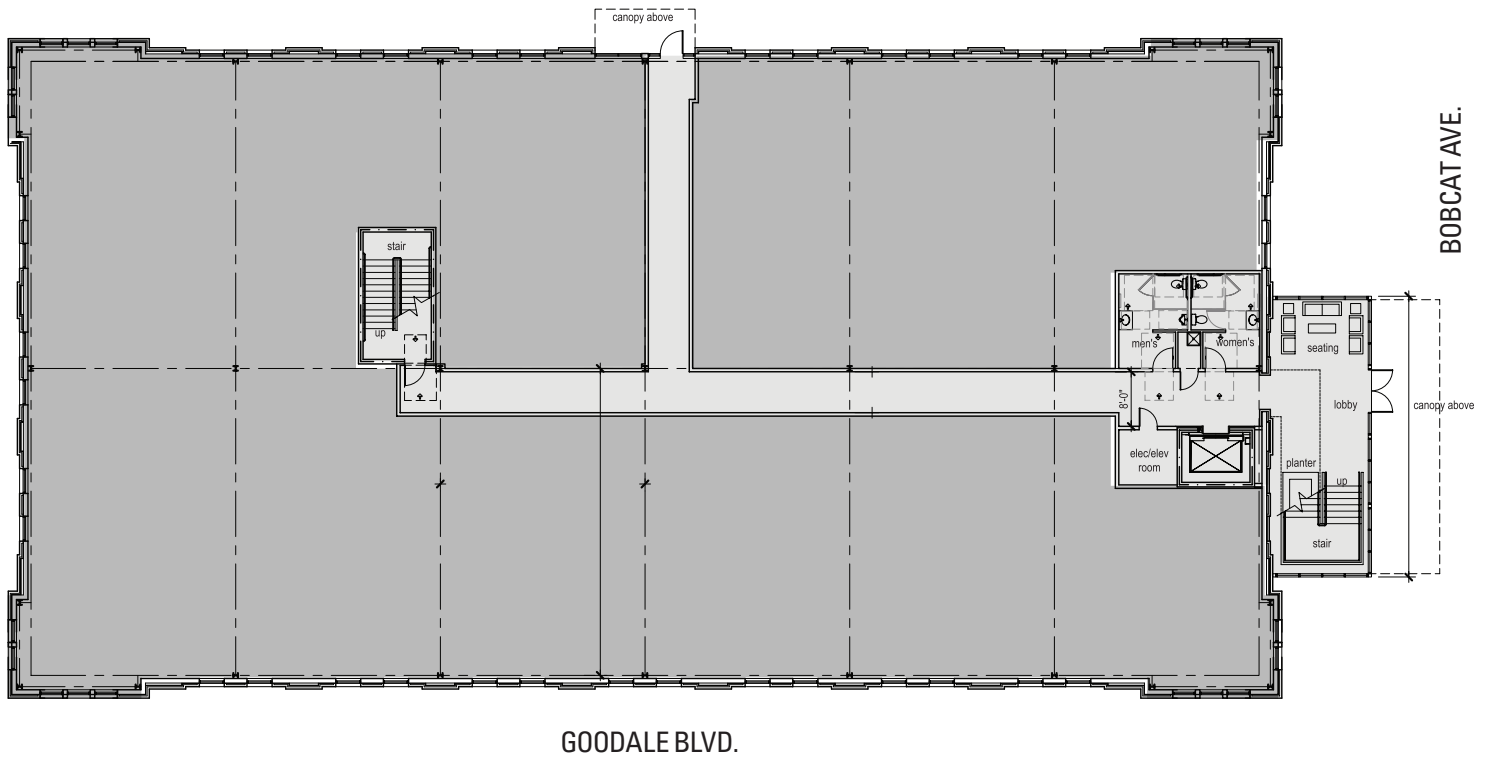
Grandview Yard is owned and developed by Nationwide Realty Investors

GRANDVIEWYARD.COM



FIRST FLOOR PLAN

No Vacancy



* Floor plan subject to change.



Nationwide®

Nationwide Realty Investors

375 North Front Street, Suite 200
Columbus, Ohio 43215
www.nationwiderealtyinvestors.com

Chris Thompson:
thompscj@nationwide.com | 614.857.2330



150 East Broad Street | Columbus, OH 43215
(614) 883-1200 | www.ngkf.com

Office Leasing

Wayne Harer: wayne.harer@ngkf.com
Ken Isenbarger: Kenneth.isenbarger@ngkf.com

Retail Leasing

Steve Siegel: Steve.Siegel@ngkf.com

